

SOLIDEAL USA

306 Forsyth Hall Drive

Charlotte, NC 28273

800-349-6721

info@solidealusa.com

solideal.com

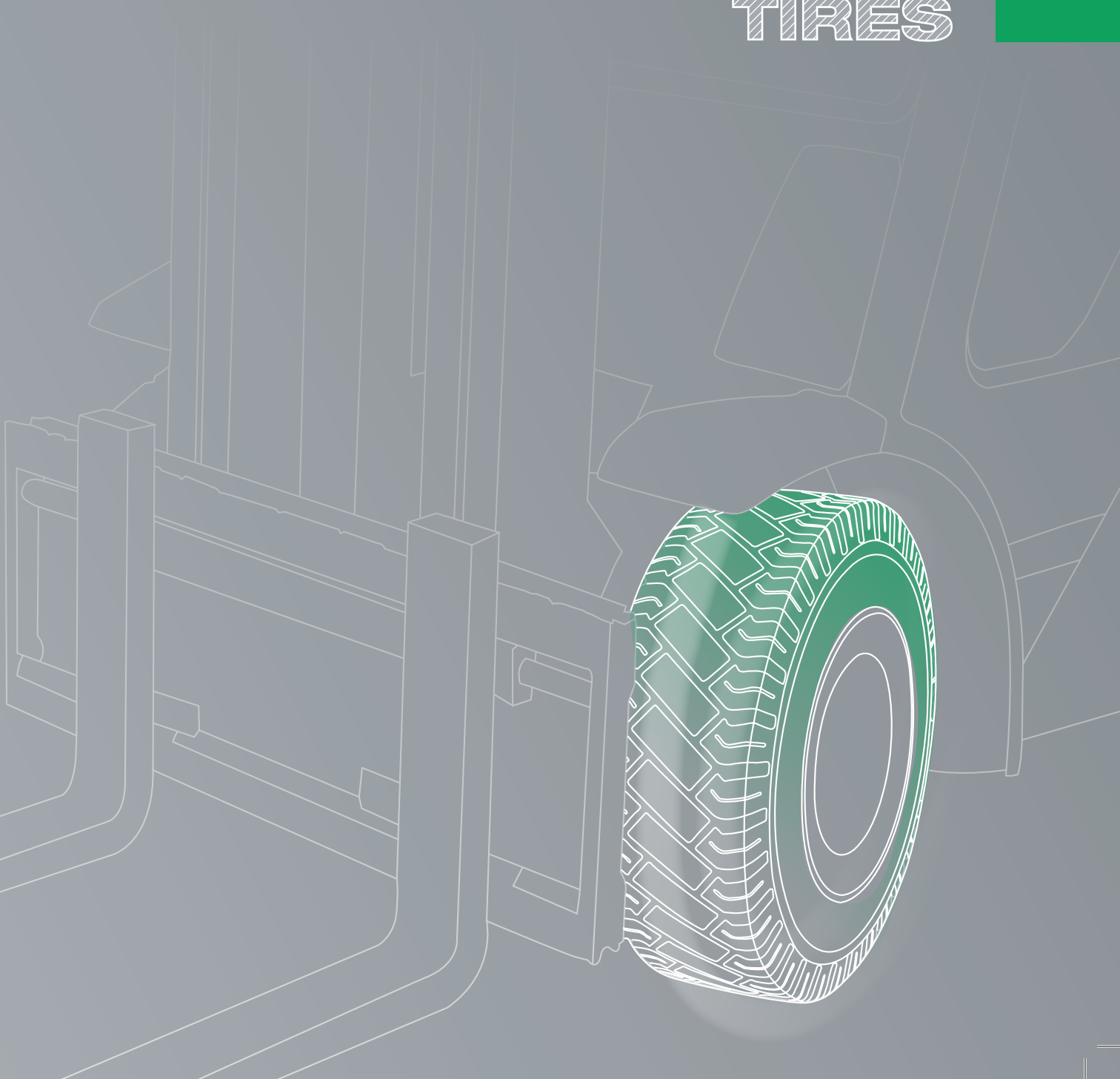




SOLIDEAL[®]



MATERIAL HANDLING TIRES





● SOLIDEAL COMPANIES

● SOLIDEAL DISTRIBUTORS

○ SOLIDEAL FACTORIES

ABOUT SOLIDEAL®

Solideal is dedicated to serving the Tire, Wheel and Rubber Track needs of the world's Construction and Material Handling industries. Our mission is to enhance mobility for the productive world.

Solideal is vertically integrated with R&D facilities based in Europe and Asia; manufacturing in Europe, North America, Asia, and over 100 distribution and service locations throughout the world.

The Solideal group employs over 9000 people worldwide.



SOLIDEAL®



MATERIAL HANDLING TIRES

SUMMARY

ABOUT SOLIDEAL®	02
SUMMARY	03
TIRE USAGE	04
PRESS-ON TIRES	06
RESILIENT TIRES	08
INDUSTRIAL PNEUMATIC TIRES	10
INDUSTRIAL WHEELS	12
PRESSES	13
SERVICE & SUPPORT	14
WARRANTY	15

TIRE USAGE

Usage Chart				
	Life Average life expectation for a forklift application with a yearly use of approximately 2000 hours.	Comfort Based upon the tire's capability to absorb shocks.	Stability Based upon the lateral stiffness of the tires and the response to steering.	Cost / Hour Based upon an average forklift application taken into account tire cost, repair, changes, fuel consumption and downtime.
Best	 RESILIENT	 PNEUMATIC	 PRESS-ON	 PRESS-ON  RESILIENT
Better	 PRESS-ON	 RESILIENT	 RESILIENT	
Good	 PNEUMATIC	 PRESS-ON	 PNEUMATIC	 PNEUMATIC

Resilient Tire Benefits

- > Reduced down time thanks to absolute puncture resistance.
- > Less maintenance operations for fitting and removal thanks to the longer tire life.
- > Higher maximum speed and maneuverability thanks to reduced tire heating allowing for longer and more intensive use.
- > Reduced requirement for maintenance thanks to less vibrations and shocks.
- > Reduced downtime from refueling and recharging thanks to low energy consumption.
- > Often best cost/hour.



				Usage Chart
Puncture Resistance The ability to resist punctures.	General Maintenance The cost and time of repair, change-over and general maintenance.	Maneuverability Often measured by the performance of operation and based upon the combination of response on steering and driving comfort.	Energy Consumption Based upon impact in cost and emissions.	
 PRESS-ON RESILIENT	 RESILIENT	 RESILIENT	 PRESS-ON RESILIENT	Best
	 PRESS-ON	 PRESS-ON		Better
 PNEUMATIC	 PNEUMATIC	 PNEUMATIC	 PNEUMATIC	Good

Press-On Tire Benefits

- > Reduced down time thanks to an absolute puncture resistance.
- > High stability resulting in better vehicle control by the operator.
- > Often best cost/hour.
- > Low rolling resistance compounds available.

Pneumatic Tire Benefits

- > Most comfortable ride of all forklift tires.
- > Lowest initial cost.
- > Easy mounting.

PRESS-ON TIRES



SOLIDEAL®

Application Chart




Product Availability

SOLIDEAL® TIRE SIZE	MAGNUM	MAGNUM SM FL	SM	HT/LUG	SOLIDEAL® TIRE SIZE	MAGNUM	MAGNUM SM FL	SM	HT/LUG	SOLIDEAL® TIRE SIZE	MAGNUM	MAGNUM SM FL	SM	HT/LUG
8 1/2 X 4 X 4			•		18 X 6 X 12 1/8	•	•	•	•	40 X 20 X 30			•	
9 X 5 X 5			•		18 X 7 X 12 1/8	•	•	•	•	250/75-140			•	
10 X 4 X 6 1/4			•		18 X 8 X 12 1/8	•	•	•	•	260/75-140			•	
10 X 5 X 6 1/4			•		18 X 9 X 12 1/8	•	•	•	•	250/130-140			•	
10 X 6 X 6 1/4			•		20 X 8 X 15			•	•	250/80-170			•	
10 X 4 X 6 1/2			•		20 X 9 X 15			•	•	250/105-170			•	
10 X 4 15/16 X 6 1/2	•		•		21 X 5 X 15			•	•	265/85-190 *			•	
10 X 5 X 6 1/2	•	•	•		21 X 6 X 15	•		•	•	300/90-203			•	
10 1/2 X 5 X 6 1/2			•		21 X 7 X 15	•	•	•	•	365/160-220			•	
10 1/2 X 6 X 6 1/2			•		21 X 8 X 15	•		•	•	300/75-240			•	
10 1/2 X 7 X 6 1/2			•		21 X 9 X 15	•	•	•	•	360/60-270			•	
12 X 4 X 8			•		20 X 8 X 16			•	•	360/85-270			•	
12 X 4 1/2 X 8			•		20 X 9 X 16			•	•	350/90-280			•	
12 X 5 X 8			•		20 X 12 X 16			•	•	405/130-305			•	
12 X 5 1/2 X 8			•		22 X 6 X 16	•		•	•	405/260-305			•	
12 X 6 1/2 X 8			•		22 X 7 X 16			•	•	415/75-305			•	
13 X 3 1/2 X 8			•	•	22 X 8 X 16	•		•	•	415/90-305			•	
13 X 4 1/2 X 8			•	•	22 X 9 X 16	•		•	•	415/100-305			•	
13 X 5 X 8			•	•	22 X 10 X 16	•		•	•	425/150-305			•	
13 1/2 X 4 1/2 X 8	•		•		22 X 12 X 16	•		•	•	425/260-305			•	
13 1/2 X 5 1/2 X 8	•	•	•	•	22 X 14 X 16			•	■	425/300-305			•	
13 1/2 X 6 1/2 X 8		•	•	•	22 X 16 X 16			•	■	450/300-305			•	
14 X 4 1/2 X 8	•		•	•	20 1/2 X 7 X 17 3/4			•	•	500/160-370			•	
14 X 5 X 10	•		•	•	22 X 6 X 17 3/4			•	•	500/200-370			•	
15 1/2 X 5 X 10	•		•	•	22 X 7 X 17 3/4			•	•	520/120-370			•	
15 1/2 X 6 X 10	•		•	•	22 X 8 X 17 3/4			•	•	550/150-370			•	
16 X 5 X 10 1/2	•		•	•	22 X 12 X 17 3/4			•	■	540/200-410			•	
16 X 6 X 10 1/2	•	•	•	•	22 X 14 X 17 3/4			•	■	550/120-410			•	
16 X 7 X 10 1/2	•		•	•	26 X 6 X 20			•	•	550/160-410			•	
15 X 4 X 11 1/4	•		•	•	26 X 7 X 20			•	•	645/220-410			•	
15 X 5 X 11 1/4	•		•	•	26 X 8 X 20			•	•	645/250-410			•	
15 X 6 X 11 1/4	•		•	•	28 X 10 X 22			•	•	645/300-410			•	
16 1/4 X 5 X 11 1/4	•	•	•	•	28 X 12 X 22	•		•	■	645/350-410			•	
16 1/4 X 6 X 11 1/4	•		•	•	28 X 14 X 22			•	•	660/203-480			•	■
16 1/4 X 7 X 11 1/4	•		•	•	28 X 16 X 22			•	•	660/250-480			•	■
16 1/4 X 8 X 11 1/4	•		•	•	40 X 10 X 30			•	•	660/280-480			•	
17 X 5 X 12 1/8	•		•	•	40 X 12 X 30			•	•	760/250-500			•	
17 X 6 X 12 1/8	•		•	•	40 X 14 X 30			•	•	840/350-559			•	
18 X 5 X 12 1/8	•		•	•	40 X 16 X 30			•	•				•	

• : Tire is available ■ : Availability of LUG tread pattern * : K-way steel band



Model	Features and benefits	LIFE RATING	ROLLING RESISTANCE ENERGY SAVING	TRACTION	ANTI-VIBRATIONS	DRIVING COMFORT	TEAR & CUT RESISTANCE	ANTI-ELECTROSTATIC LOADING	STABILITY	IC FORKLIFT	ELECTRIC FORKLIFT	TRAILER	AIRPORT EQUIPMENT (GSE)	CONSTRUCTION EQUIPMENT	STATIC / SPECIAL APPLICATION	SMOOTH FLOOR	ROUGH FLOOR/DEBRIS	EXPLOSIVE ENVIRONMENTS	RO-RO APPLICATION	WET ENVIRONMENT	
			MAIN FEATURES						USE				APPLICATIONS								
SOLIDEAL® MAGNUM ERP 	<ul style="list-style-type: none"> » Best in Class forklift tire » Technologically advanced tread » Huge footprint for maximum stability 		••	••	••	••	••	••	••	✓	✓					••	••			••	
SOLIDEAL® MAGNUM NM 	<ul style="list-style-type: none"> » Perfect for clean floor environments such as food processing or pharmaceutical industries 		••	••	••	••	••	••	••	✓	✓					••	••			••	
SOLIDEAL® MAGNUM SM FL 	<ul style="list-style-type: none"> » Extremely low vibration transfer » High stability for smooth floor environments 		••	••	••	••	••	••	••	✓	✓					••	••			•	
SOLIDEAL® ELCON 	<ul style="list-style-type: none"> » Safe for explosive environments » Electrical resistance below 50 kOhm 		••	••	••	••	••	••	••	✗	✓					••	••	••		••	
SOLIDEAL® MAGNUM SRP 	<ul style="list-style-type: none"> » Natural rubber compound » Provides excellent driving comfort and traction » Contributes to lower fuel consumption 		••	••	••	••	••	••	••		✓					••	••			••	
SOLIDEAL® ERP SM 	<ul style="list-style-type: none"> » Universal dual purpose compound and excellent life » Good comfort and rolling resistance 		••	•	••	••	••	••	••	✓	✓					••	••			•	
SOLIDEAL® ERP HT 	<ul style="list-style-type: none"> » Universal dual compound » Good traction in roughest conditions 		••	••	••	••	••	••	••	✓	✓					••	••			••	
SOLIDEAL® SRP SM 	<ul style="list-style-type: none"> » Low rolling resistance specifically for trailers and electric trucks » Cool running 		••	•	••	••	••	••	••		✓	✓	✓	✓		••	••			••	•
SOLIDEAL® SRP+ SM 	<ul style="list-style-type: none"> » Very low rolling resistance » Built for driving comfort in smooth floor and Ro-Ro applications 		••	•	••	••	••	••	••		✓	✓		✓		••	••			••	•
SOLIDEAL® MAGNUM GREY NM WALNUT 	<ul style="list-style-type: none"> » Made for usage in wet and slippery environments 		••	••	••	••	••	••	••	✓	✓					••	••			••	••
SOLIDEAL® MAGNUM ECR 	<ul style="list-style-type: none"> » Made with Solideal extra-cut-resistant compound 		•	••	••	••	••	••	••	✓				✓		••	••			••	••
SOLIDEAL® MAGNUM NM ANTI-STATIC 	<ul style="list-style-type: none"> » Patented only anti-static non-marking tire in the world » DO NOT USE in explosive dangerous applications 		••	••	••	••	••	••	••	✓	✓					••	••			••	••

RESILIENT TIRES



SOLIDEAL®

Application Chart












Product Availability

by rim width

SOLIDEAL® TIRE SIZE	MAG²	MAGNUM	SM	HT	LUG/ SKS/MIL	RIB LUG	SOLIDEAL® TIRE SIZE	MAG²	MAGNUM	SM	HT	LUG/ SKS/MIL	RIB LUG
3.00-4		2.1/2.5					27 X 10-12 (250/25-12)	8	8	8	8		
4.00-4		2.1/2.5			2.1/2.5 (MIL)		150/100-13 (23x5)		3.75				
3.00-5					2.15 (LUG)		5.50-15				4.5 SDC		4.5 SDC
3.50-5					3 (LUG)		6.00-15		4.5 SDC				
10.5 X 4-6						3.25	7.00-15		5.5/6		5.5/6		
140/55-6	4.5E					4.5E	7.50-15	(5.5)/(6)	5.5/6/6.5		5.5/6/6.5		
4.00-8		3		2.5/3/3.25		2.5/3/3.25	8.25-15	(5.5)/(6)/(6.5)	5.5/6/6.5	5.5/6/6.5	5.5/6/6.5		
5.00-8	3	3/3.25	3/3.25	3/3.25		3.75	28 X 9-15 (225/75-15)	7	7		6.5/7		
15 X 4 1/2-8 (125/75-8)	3	3/3.25	3/3.25	3/3.25		3/3.25	28 X 12-15	9.75			9.75		
16 X 6-8 (150/75-8)	4.33	4.33	4.33	4.33			355/50-15		9.75				
17 X 7-8			4.33				250-15 (250/70-15)	7/7.5	7/7.5		7/7.5		
18 X 7-8 (180/70-8)	4.33	4.33	4.33	4.33			300-15 (315/70-15)	8	8	8	8		
18 X 9-8			7	7			310-15 EW		8V				
100/50-8 (2.00-8)			3				355/65-15	9.75	9.75		9.75		
100/80-8			2.5				6.50-16			5.5	5.5/6	5.5 (SKS)	
5.00-9		3.5	3.5				7.50-16				5.5/6	5.5/6 (SKS)	
6.00-9	4	4	4	4		4	8.00-16					5.5/6 (SKS)	
7.00-9		(5)					9.00-16					5.5/6 (SKS)	
16 X 5-9						3.5/4	7.50-20				6/6.5		
18 X 6-9 (160/75-9)			4				8.25-20				6.5/7/7.5		
21 X 8-9 (200/75-9)	6	6		6/7			9.00-20				6.5/7/7.5		
140/55-9	4	4				4	10.00-20	6.5/7/7.5/8	7/7.5/8	7/7.5/8			
6.50-10	5	5	5/5.5	5/5.5			11.00-20		7.5/8				
7.50-10		5/5.5		5/5.5			12.00-20		8/8.5	8/8.5/10	8/8.5		
180/60-10	5					5	31 X 10-20			7.5		7.5 (SKS)	
21 X 7-10 (180/80-10)			5				33 X 12-20			7.5		7.5 (SKS)	
23 X 9-10 (225/75-10)	6.5	6.5		6.5			36 X 14-20			7.5		7.5 (SKS)	
200/50-10	6.5	6.5		6.5		6.5	12.00-24			10	8TG/8.5		
7.00-12	5	5	5	5			14.00-24		10		10		
8.25-12		5	5				355/85-24 (48.5X14-24)				11.25/12		
23 X 10-12 (250/60-12)	8	8	8	8			14.00-25		11.25				
23 X 12-12 (315/45-12)							16.00-25		11.25				

Tire is available in normal and quick type / Tire is available in normal type only / Tire is available in quick type only / (): Planned availability



Model	Features and benefits	LIFE RATING	MAIN FEATURES							USE					APPLICATIONS				
			ROLLING RESISTANCE ENERGY SAVING	TRACTION	ANTI-VIBRATIONS	DRIVING COMFORT	TEAR & CUT RESISTANCE	ANTI-ELECTROSTATIC LOADING	STABILITY	IC FORKLIFT	ELECTRIC FORKLIFT	TRAILER	AIRPORT EQUIPMENT (GSE)	CONSTRUCTION EQUIPMENT	STATIC / SPECIAL APPLICATION	SMOOTH FLOOR	ROUGH FLOOR/DEBRIS	EXPLOSIVE ENVIRONMENTS	RO-RO APPLICATION
SOLIDEAL® MAG²SL 	<ul style="list-style-type: none"> » Designed to minimize vibrations » Excellent rolling resistance and stability » High performance tire for all applications 		•••	•••	•••	•••	•••	•••	•••	✓	✓	✓	✓	✓	•••	•••		•••	•••
SOLIDEAL® MAGNUM STANDARD 	<ul style="list-style-type: none"> » Long life » Great stability and driving comfort » The industry's premier resilient tire 		•••	•••	•••	•••	•••	•••	•••	✓	✓	✓	✓	✓	•••	•••		•••	•••
SOLIDEAL® MAGNUM GREY NM 	<ul style="list-style-type: none"> » Natural rubber compounds for low rolling resistance » The tire for clean floors » Exceptionally long life 		•••	•••	•••	•••	•••	•••	•••	✓	✓		✓	✓	•••				•••
SOLIDEAL® ERS HT 	<ul style="list-style-type: none"> » Deep lug tread pattern » Universal use 		•••	•••	•••	•••	•••	•••	•••	✓	✓	✓	✓	✓	•••	•••			•••
SOLIDEAL® ERS+ SM 	<ul style="list-style-type: none"> » Rolling resistance promotes low fuel consumption » Reduces vibration » Ideal for trailers 		•••	•••	•••	•••	•••	•••	•••		✓	✓		✓	•••			•••	•••
SOLIDEAL® SM ECR 	<ul style="list-style-type: none"> » Extra cut resistant compound » Excellent tire life in high tear and toughest applications 		•••	•••	•••	•••	•••	•••	•••	✓			✓		•••	•••			•••
SOLIDEAL® MAGNUM ELCON 	<ul style="list-style-type: none"> » For electro-static charging problems » Electrical resistance below 50 kOhm 		•••	•••	•••	•••	•••	•••	•••		✓				•••		•••		•••
SOLIDEAL® RIB LUG 2L GL 	<ul style="list-style-type: none"> » Low rolling resistance, high comfort, low vibration » Self-alignment for GSE trailers 		•••	•••	•••	•••	•••	•••	•••				✓		•••				•••
SOLIDEAL® SKS 	<ul style="list-style-type: none"> » Driving comfort improved by 40% » Massive tread pattern for excellent traction » Impressive stability 		•••	•••	•••	•••	•••	•••	•••				✓		•••	•••			•••
SOLIDEAL® HT BAGGER 	<ul style="list-style-type: none"> » Preferred in rough environments » Provides good stability and traction » Designed for wheeled excavators 		•••	•••	•••	•••	•••	•••	•••				✓		•••	•••			•••
SOLIDEAL® MAGNUM® GREY NM WALMUT 	<ul style="list-style-type: none"> » Made for usage in wet and slippery environments » Gives 50% more pulling power 		•••	•••	•••	•••	•••	•••	•••	✓	✓		✓		•••				•••
SOLIDEAL® MAGNUM NM ANTI-STATIC 	<ul style="list-style-type: none"> » Patented only anti-static non-marking tire in the world » DO NOT USE in explosive dangerous applications 		•••	•••	•••	•••	•••	•••	•••	✓	✓		✓		•••				•••

INDUSTRIAL PNEUMATIC TIRES



SOLIDEAL®

Application Chart



* Applicable off road

Product Availability

by ply rating

TIRE SIZE	SOLIDEAL® ED	SOLIDEAL® ZZRIB	SOLIDEAL® RIB LUG	SOLIDEAL® HAULER® LT	SOLIDEAL® HAULER® SM	SOLIDEAL® HAULER® HATR	SOLIDEAL® HAHD PORTMASTER	SOLIDEAL® SKS
15 X 4 1/2-8 (125/75-8)			12					
4.00-8	6/8/10							
5.00-8	6/8/10		8/10	10				
16 X 6-8 (150/75-8)			10	14/16				
18 X 7-8 (180/70-8)	14/16		14/16	8/10/14/16/18				
6.00-9	10/12	(6)/(8)/10	10	10/12				
21 X 8-9 (200/75-9)	14/16		14	16				
6.50-10	10/12/14	10	10	10/12/14				
7.50-10	12/16							
23 X 9-10 (225/75-10)	14/16/18			18/20				
7.00-12	12/14/16			10/12/14/16				
8.25-12				(12)				
23 X 10-12 (250/60-12)	14/16			(8)/(12)/16				
27 X 10-12 (250/75-12)	14/16/20			14/16/20/24				14
23 X 5 (150/100-13)	6/8/10							
7.00-15	10/12/14			14				
7.50-15	10/12/14/16			14				
8.25-15 (7.50-15(32))	12/14/16			14/16/18	16/20	16		
28X9-15 (225/75-15)	12/14/16		16	14/16				
250-15 (250/70-15)	16/18/20			16/18/20				
290-15				20				
300-15 (315/70-15)	18/20			18/20/22				
315/85-15				20				
28X12.5-15 (355/45-15)				24				
32 X 12.1-15				24				
7.50-16	12							
8.00-16.5		8						
9.00-20	14			(14)/(16)				
10.00-20	16			16/18	16/20	16		
11.00-20				16/18				
12.00-20				18/20/28	20	20	20/28	
12.00-24				(20)/(24)				
14.00-24				(24)/28				
14.00-25				28/(32)				
16.00-25				(28)/32/(36)				
18.00-25				(28)/(32)/(36)/(40)				
18.00-33				(40)				

(): Planned availability



Model	Features and benefits	LIFE RATING	MAIN FEATURES							USE				APPLICATIONS					
			ROLLING RESISTANCE ENERGY SAVING	TRACTION	ANTI-VIBRATIONS	DRIVING COMFORT	TEAR & CUT RESISTANCE	ANTI-ELECTROSTATIC LOADING	STABILITY	IC FORKLIFT	ELECTRIC FORKLIFT	TRAILER	AIRPORT EQUIPMENT (GSE)	CONSTRUCTION EQUIPMENT	STATIC/SPECIAL APPLICATION	SMOOTH FLOOR	ROUGH FLOOR/DEBRIS	EXPLOSIVE ENVIRONMENTS	RO-RO APPLICATION
SOLIDEAL® HAULER® LT	<ul style="list-style-type: none"> » Wide-wall rim guard and massive tread pattern for all-around protection » Wide square profile for stability 		••	••	••	••	••	••	••	✓	✓	✓	✓	✓	••	••			••
SOLIDEAL® ED	<ul style="list-style-type: none"> » Universal service » Deep lugs for optimal traction 		••	••	••	••	••	••	••	✓	✓		✓		••	••			••
SOLIDEAL® RIB LUG	<ul style="list-style-type: none"> » Excellent rolling resistance reduces fuel consumption » Low vibration for driver comfort 		••	••	••	••	••	••	••		✓		✓	✓	••	••			••
SOLIDEAL® ZZRIB	<ul style="list-style-type: none"> » Ideal for GSE tractor usage » Excellent steerability 		••	••	••	••	••	••	••				✓	✓	••	••			••
SOLIDEAL® HAULER® SM	<ul style="list-style-type: none"> » Smooth tread reduces vibrations and increases driver comfort » Extended tire life 		••	••	••	••	••	••	••	✓		✓	✓	✓	••	••			••
SOLIDEAL® HAULER® HATR	<ul style="list-style-type: none"> » Ideal for balanced life on dual drive or steering wheels » For rail track applications 		••	••	••	••	••	••	••	✓			✓		••	••			••
SOLIDEAL® PORT-MASTER	<ul style="list-style-type: none"> » Industry leading Deep lugs in a bias tire for extended life » Increased durability for tough applications - especially ports 		••	••	••	••	••	••	••	✓					••	••			••
SOLIDEAL® HAULER® LT GREY NM	<ul style="list-style-type: none"> » Leaves no marks » Worlds only non-marking industrial tire 		••	••	••	••	••	••	••	✓	✓				••	••			••
SOLIDEAL® SKS	<ul style="list-style-type: none"> » The tire for 4 wheel drive trucks and rough terrain applications 		••	••	••	••	••	••	••	✓			✓		••	••			••
SOLIDEAL® HAULER® LT ELCON	<ul style="list-style-type: none"> » For electro - static charging problems » Electrical resistance below 50 kOhm 		••	••	••	••	••	••	••	✓			✓		••	••	••		••

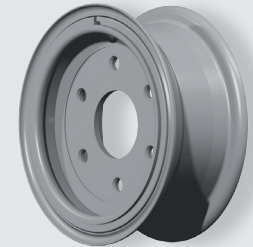
INDUSTRIAL WHEELS

WHEELS FOR EVERY INDUSTRIAL TIRE



SOLIDEAL® Multi-piece forklift wheels

- > Designed for all heavy duty applications.
- > Available in 2, 3 and 4 piece components.
- > Full range for all sizes of industrial tires up to 25".



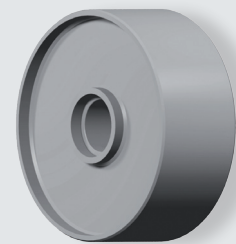
SOLIDEAL® Split wheels

- > Made with safety and reliability as a priority.
- > Usage of special safety hardware and markings for all wheels.
- > Available to fit industrial tire sizes through to 700x12.



SOLIDEAL® Press on wheels and hubs

- > Manufactured in cast or machined steel to provide quality performance throughout the life of the machine.
- > These wheels are designed for extreme loads with low centre of gravity.



SOLIDEAL® Quick wheels

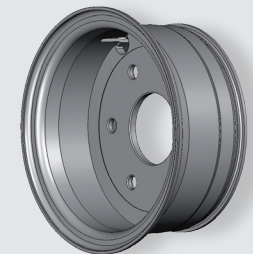
- > Designed to fit tires with specially integrated heel nose, according to ETRTO's narrow geometrical tolerances.
- > Fast and easy mounting.
- > Reduces cost of wheel.
- > Operates as safe as normal tyres with less parts which could fail or be damaged.



Normal Heel



Quick Heel



Please refer to the Solideal Wheel brochure for safety and precautions

SOLIDEAL OFFERS A BROAD RANGE OF TIRE PRESSES AND ACCESSORIES DESIGNED FOR EACH OF THE WORLD'S MAJOR MARKETS.

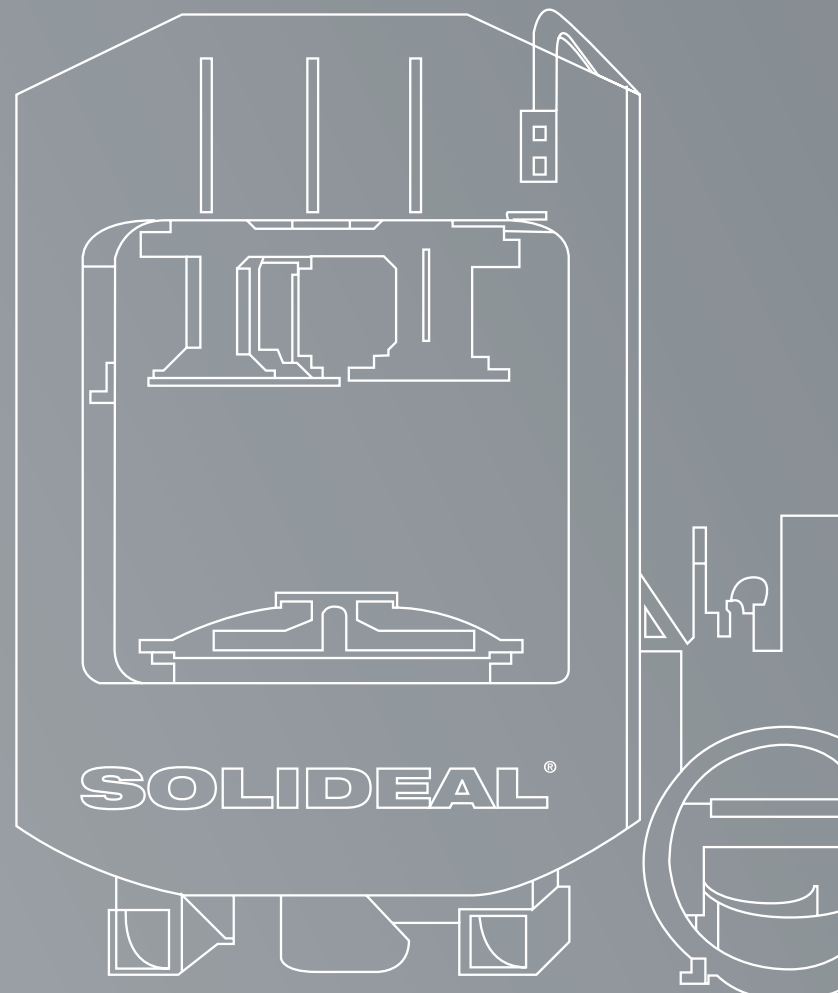
Our tire-mounting presses are high quality products. Durability, strength, weight and ergonomics are some of the key features. Solideal press designs are based on our long experience with industrial tire pressing in collaboration with mechanical and hydraulic specialists. Their excellent quality guarantees trouble-free operation for many years.

SOLIDEAL OFFERS PRESSES TO MOUNT AND DEMOUNT ALL TYPES OF SOLID TIRES:

- > Resilient tires on multipiece and split wheels.
- > Quick-tires on multipiece wheels.
- > Tires on multipiece and split wheels.
- > Press-ons.

SOLIDEAL ALSO OFFERS A BROAD RANGE OF TIRE PRESS ACCESSORIES:

- > Lightweight starting cones.
- > Demounting rings.
- > Quick demounting rings.
- > Support rings.
- > Demounting support cages.
- > Advance bands / lockring press rings.
- > Lifting device with adjustable forks.



For more information and a detailed offer please contact us directly at info@solideal.com

Service for industry

We know that downtime costs you money! That is why Solideal operates over 60 service centers and the right mix of mobile and stationary service equipment to best attend to our customers' needs. With extensive product knowledge and training, Solideal's Service Technicians have the skill and experience to fully service the array of tires and wheels we supply to Industry.

OEM partnership

As a leader in its business, Solideal is proud to service the Original Equipment needs of several of the worlds major Forklift and Construction equipment companies. As a key part of the OEM relationship, Solideal offers just-in-time (JIT) solutions for tires and assemblies via its global network of distribution and service centers.

Quality management

Solideal first achieved ISO quality management certification in 1997 in our manufacturing as well as in the distribution network. Today, all of our Sri Lanka factories, global research and development activities, and many centers in the distribution network are certified to the ISO 9001:2000 registration. Our goal is continuous improvement and quality management throughout the group. Our ISO registrations help ensure that every order is processed with the same attention to quality and customer satisfaction.

WARRANTY



SOLIDEAL INTERNATIONAL LIFETIME TIRE GUARANTEE.

All Solideal products are guaranteed to be free from defects due to materials and workmanship.

If a product is defective upon our examination and analysis, Solideal will provide an allowance against the original purchase price. The allowance will be determined by Solideal, to be applied toward the purchase of a new product, based on the remaining un-used portion of the tread or warrantable lifetime on the defective product.

The cost of transportation, service, and sales tax, already paid will be borne by the owner of the Solideal product making the claim. Warranty will not apply if the Solideal product has been installed, altered, repaired or misused in any matter whatsoever, which, in our opinion, has affected performance.

This warranty is for the exclusive benefit of the owner and this warranty is not assignable.



SUSA MH 0309